

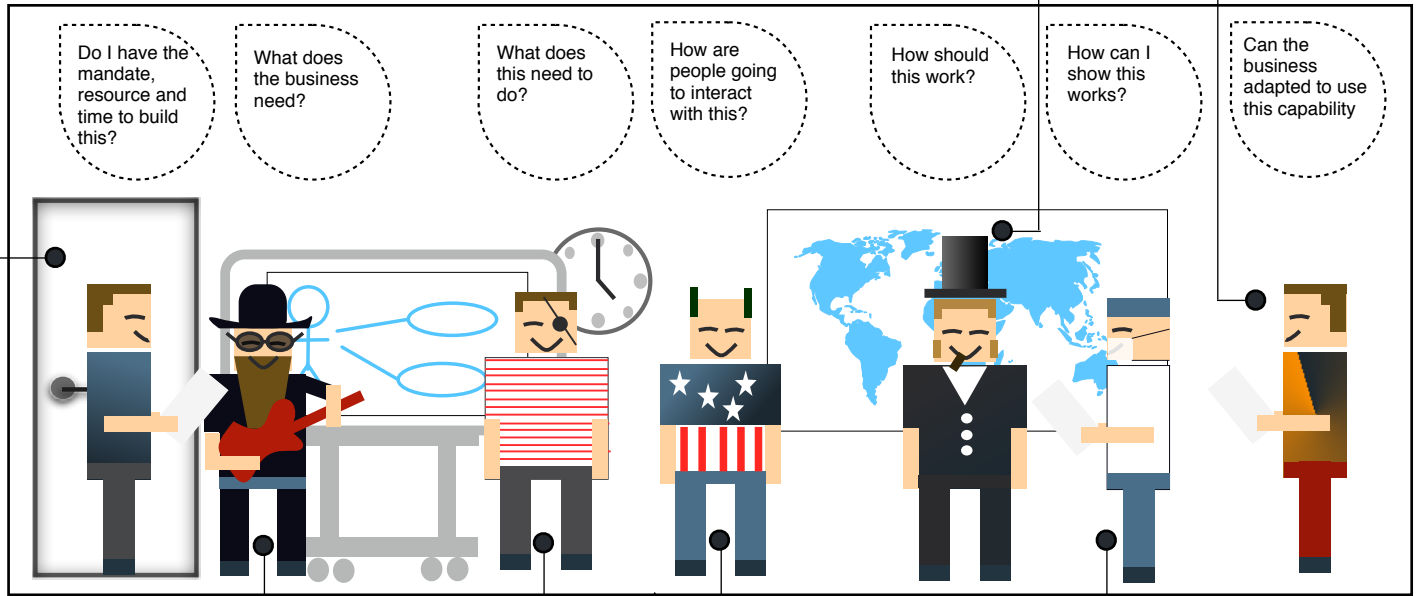
- New Requirement Identified**
 - Logged
 - Triaged
 - Prioritised
- Requirement Elaborated**
 - Business Analysis
 - User Centric Design
- Capability Designed**
 - Architectural Compliance
 - X-project Alignment
- Supply Options for Capability Identified**
 - Technology
 - COTs
 - Suppliers
- Capability Commissioned with Supplier**
 - Take on work (RFC)
 - ROM
 - Work Package Authorisations

Project Manager
 Primarily responsible for finance, resourcing, scheduling and progress reporting

Enterprise Architect/ Systems Engineer
 Primarily responsible for the architectural integrity and viability of the capability

Business Change
 Primarily responsible for introducing the delivered capability into the business

Customer Side Project Team

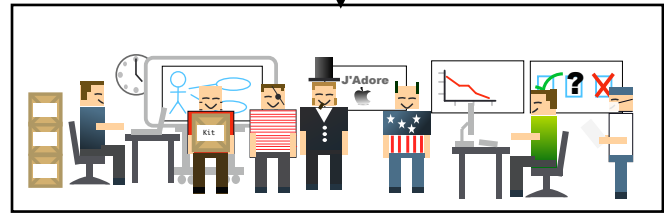


Senior User
 Primarily responsible for the realisation of business benefit

Business Analyst/ Requirements Manager
 Primarily responsible for the collection and recording of SMART requirements

User Centric Designer
 Primarily responsible for ensuring the use-ability of the capability

Assurance Manager
 Primarily responsible for assessing the quality of the delivered capability



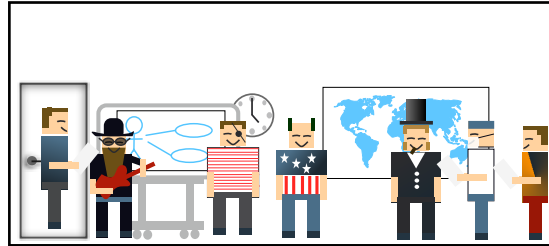
Supply Side Project Team

- Benefits Measurement**
 - KPIs
 - Critical Success Factors
 - Outcomes
- Transition to Operations**
 - Training
 - Business Change
 - Deployment
 - Champions
 - Operational Evaluation
- User Acceptance Testing**
 - Validation
 - Useability
- Project Assurance Activities**
 - Verification
 - Architectural Compliance
 - System Integration Test
- Take Delivery**
 - Quality Control
 - Configuration Management

Anatomy of a Customer Side Project Team



Customer Side Project Team



"About the author"

With over 20 years in the IT industry, **Stefan Brittain** is currently a Senior Manager and lean development proponent at a leading UK defence company. Stefan holds certifications in PRINCE2, ITIL, TOGAF and ISEB-ISTQB.



Mobilisation/Take on work

- Resource allocation
- Development environment established

Solution Requirements Elicitation

- User Stories
- UX Designs

Solution Designed

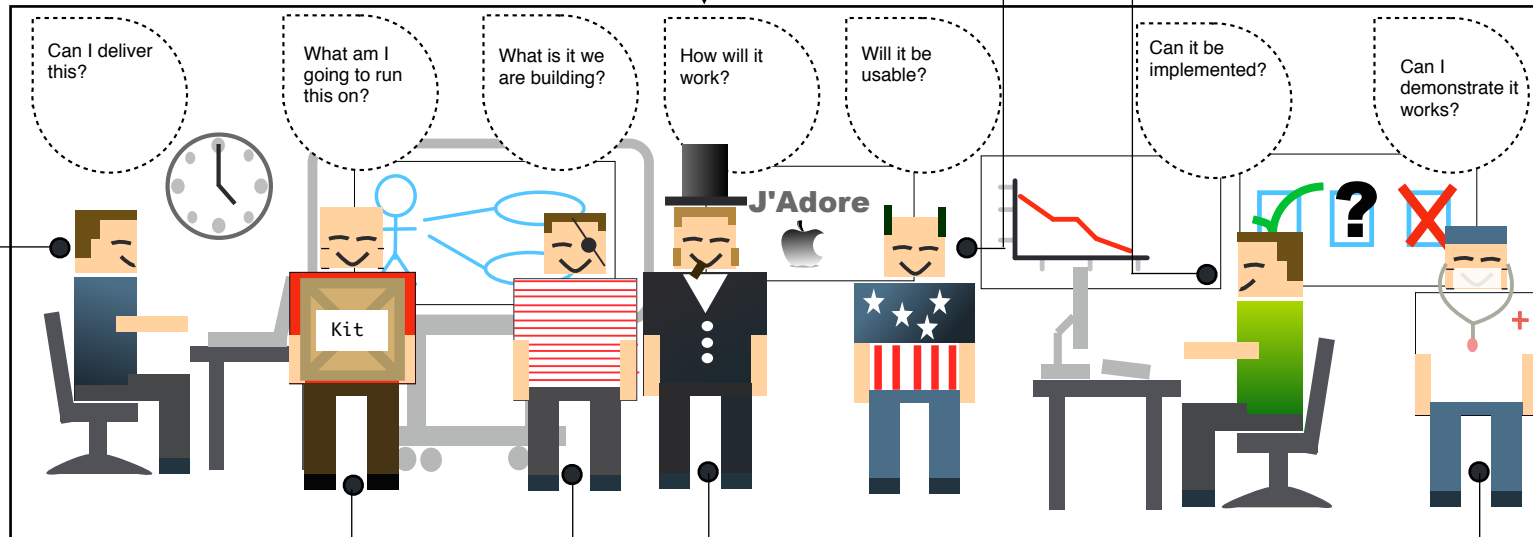
- System/component designs
- Static/behavioural designs
- Interface Specifications

Solution Implemented

- Component Development
- Config Management
- Debugging

Project Manager
Primarily responsible for finance, resourcing, scheduling and progress reporting

Supply Side Project Team



User Interface Designer
Primarily responsible for ensuring the design integrity and usability of the user interfaces

Developer
Responsible for the development of components which comprise the solution

Information Technology Operators
Primarily responsible hosting solution

Business Analyst/ Requirements Manager
Primarily responsible for the collection and recording of requirements

Solution Architect/ Technical Lead
Primarily responsible for the architectural integrity, viability and delivery of the solution

Assurance Manager
Primarily responsible for assessing the quality of the delivered solution

Project Handover

- Packaging
- QA checks

System Test

- Functional test
- Non-functional test
- Compliance test

Integration Test

- Component Integration
- Dynamic analysis
- Defect management

Component Test

- Unit Testing
- Static Analysis
- Inspections

Anatomy of a Supply Side Project Team